

Kingaroy Coal Mine: Proposed Route of Coal Rail Line

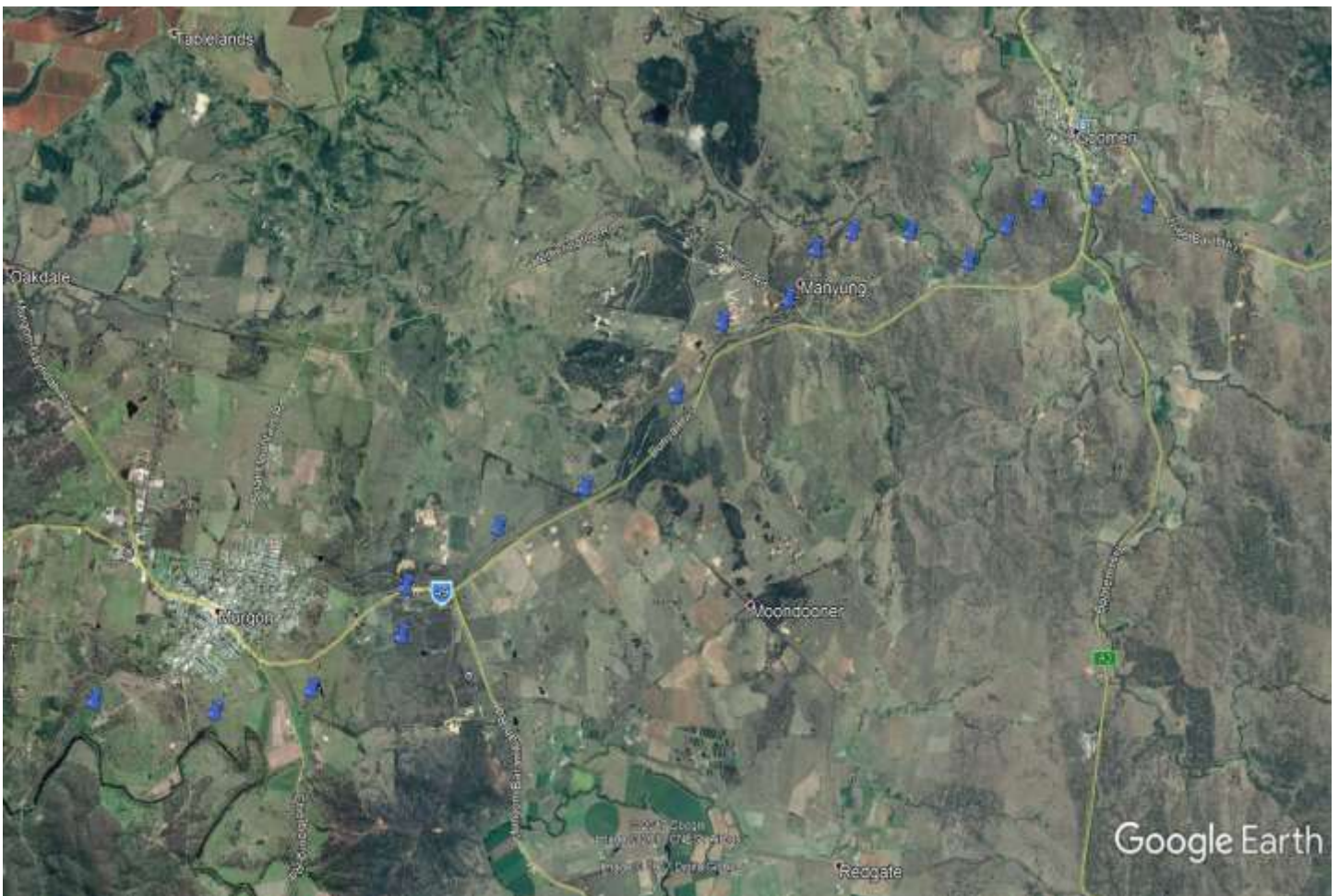
Many South Burnett residents may not be aware that Moreton Resources, (using the name “MRV Tarong Basin Coal”), has included a coal rail line as a part of its proposal to the Qld Government to develop a coal mine near Kingaroy

The company has produced a large scale and low resolution map that shows the approximate path of the rail line from Kingaroy to Goomeri, and then to a proposed and undefined port (Gladstone / future Bundaberg). The map indicates a route that follows the recently opened South Burnett Rail Trail, but with variations to pass near to, but routed around the towns of Kingaroy, Wondai, Murgon and Goomeri.

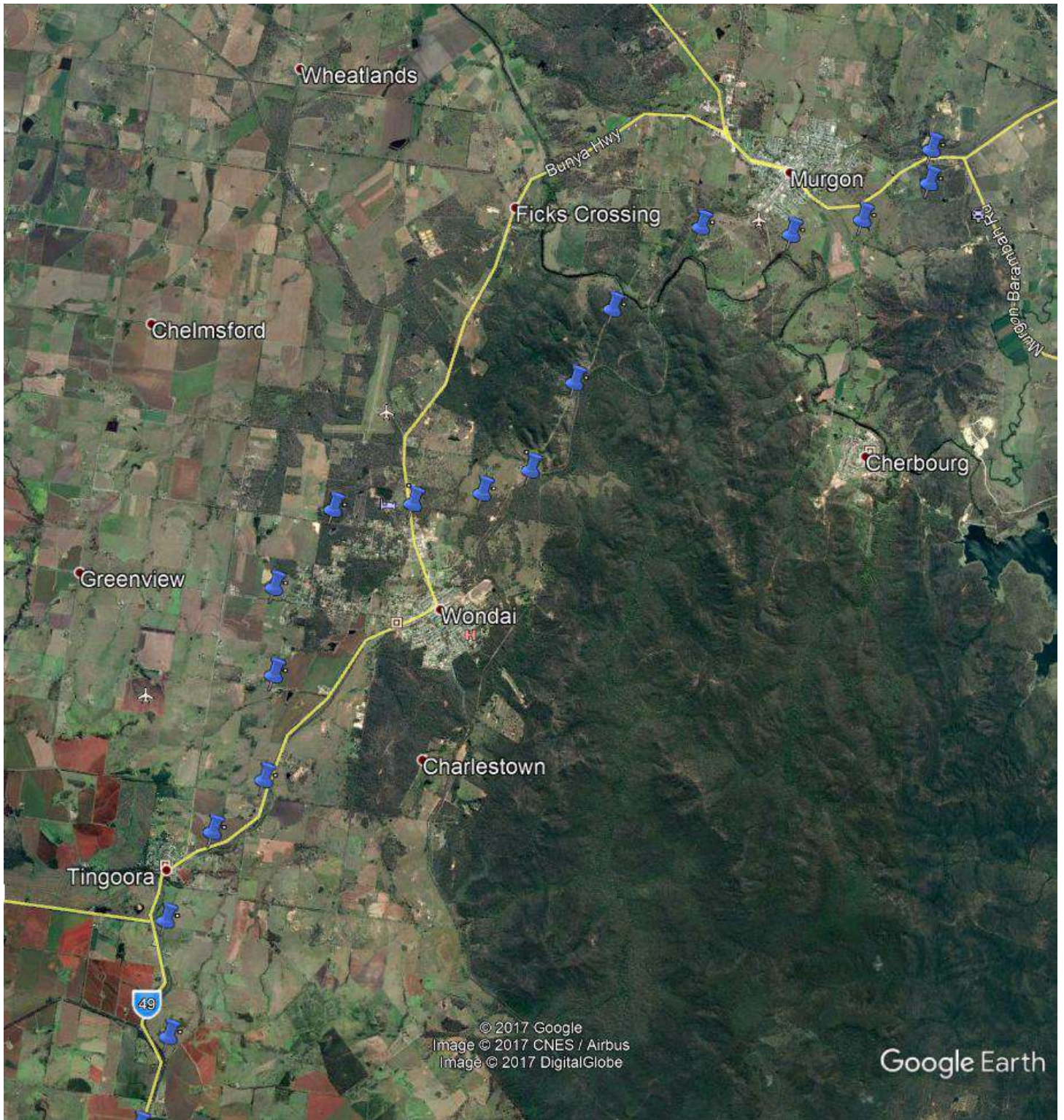
That map is available at: <http://www.asx.com.au/asxpdf/20171027/pdf/43nn7d6bxf9h9s.pdf>.

Kingaroy Concerned Citizens Group (KCCG) has redrawn this route on a map using Google Earth for the purpose of more clearly representing the proposed route. We are hopeful that this map will better inform the South Burnett community of the likely impact of the rail line.

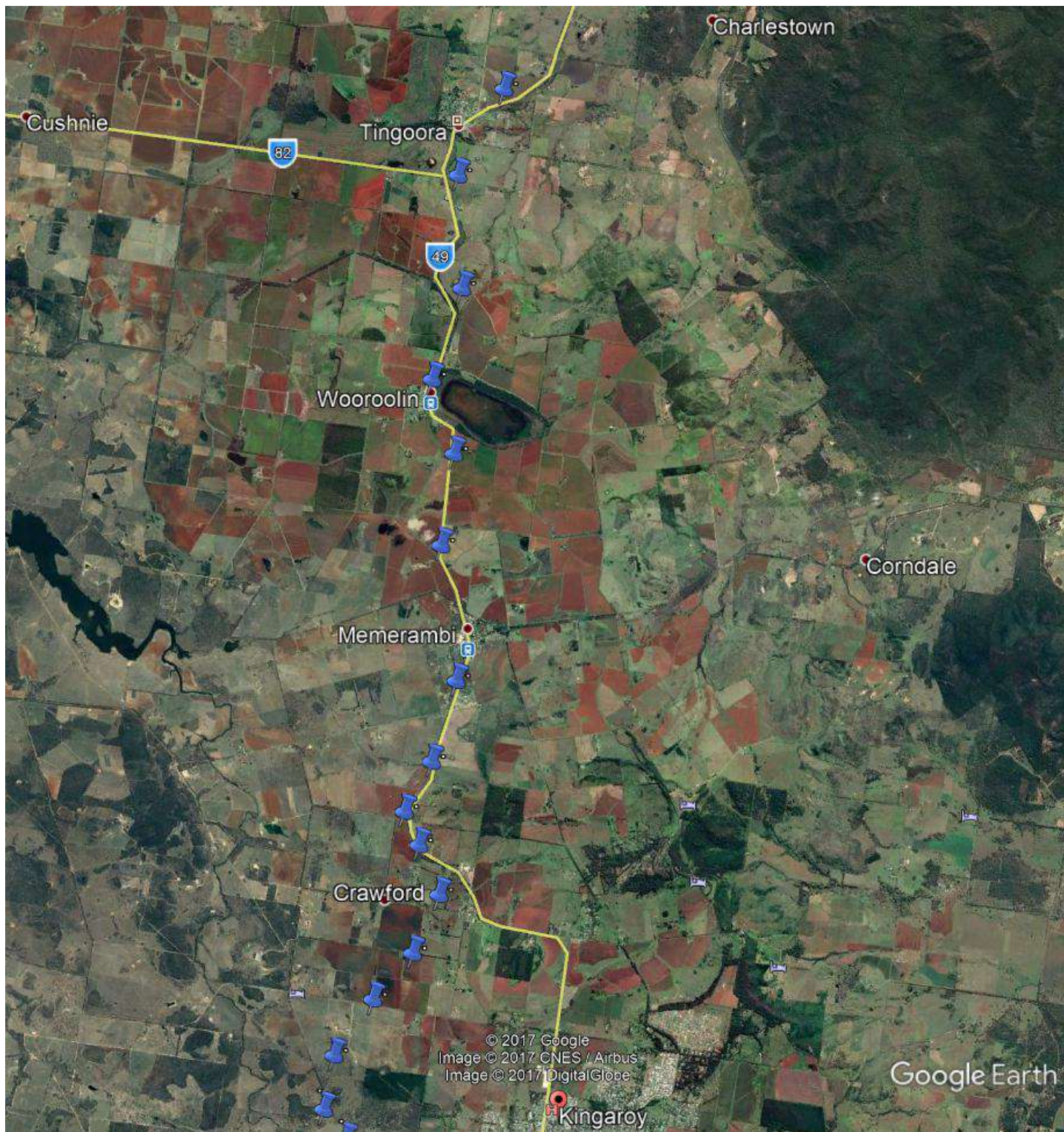
Murgon to Goomeri



Tingoora to Murgon



Crawford to Tingoorra



Kingaroy to Crawford

